

Commander Submarine Forces



Vice Admiral Joe Tofalo
Commander, Submarine Forces



Global Maritime Presence Ensures U.S. Prosperity

Surface Ships



Ships

- **Large volume** maritime warfighting capacity
- **Overt**; ideal for “signaling”
- **Inspection and boarding** operations

Naval Air Forces



Aircraft Carriers



Aircraft

- **High speed** reaction
- Ability to **reach far inland**
- **Repeat missions** (“reload”) with a “Man in the loop”
- **Highly flexible** operations

Undersea Forces



Attack and Guided Missile Submarines



Ballistic Missile Submarines

- Flexible and **survivable nuclear deterrent**
- Capable of **undetected operations** (intel)
- **Can penetrate** deep into enemy waters
- Capable of long-endurance **independent offensive operations** far forward

Since WWII, the U.S. Navy has used its global dominance to stabilize the world’s maritime commons, permitting the greatest expansion of trade, prosperity and living standards in history

US Submarine Force

- ~10% of Navy Personnel
- ~25% of Warships
- ~13% of Navy Budget
- ~50% of accountable nuclear warheads
 - ~70% under New START
- 100% of survivable warheads
- Over 4000 SSBN patrols completed (over 1100 Trident patrols)



Command Responsibilities



Commander Submarine Forces



Commander, Submarine Force Atlantic



Commander Task Force 144



Commander Task Force 84



Commander Task Force 46



Commander, Allied Submarine Command



Submarine Force Platforms

SSBN and SSGN

OHIO Class ~150 Crew
Length: 560 ft, Beam: 42 ft
Displacement: Approx. 18,750 tons
Speed: 20+ knots

OHIO Replacement
Construction to begin in 2021

VA Class Blk I-IV **Blk V**

VIRGINIA Class ~135 Crew
Length: 377 ft, Beam: 34 ft
Displacement: Approx. 7,800 tons
Speed: 25+ knots

SSN 21-22 **SSN 23**

SEAWOLF Class ~ 140 Crew
Length: (SSN 21-22) 353 ft / (SSN 23) 453 ft ,
Beam: 40 ft
Displacement: Approx. 9,100 tons / 12,200 tons
Speed: 25+ knots

688 - 688I

LOS ANGELES Class ~140 Crew
Length: 360 ft, Beam: 33 ft
Displacement: Approx. 6,900 tons
Speed: 20+ knots

... Running 25% of the Navy's Combatants



Submarine Force Homeports

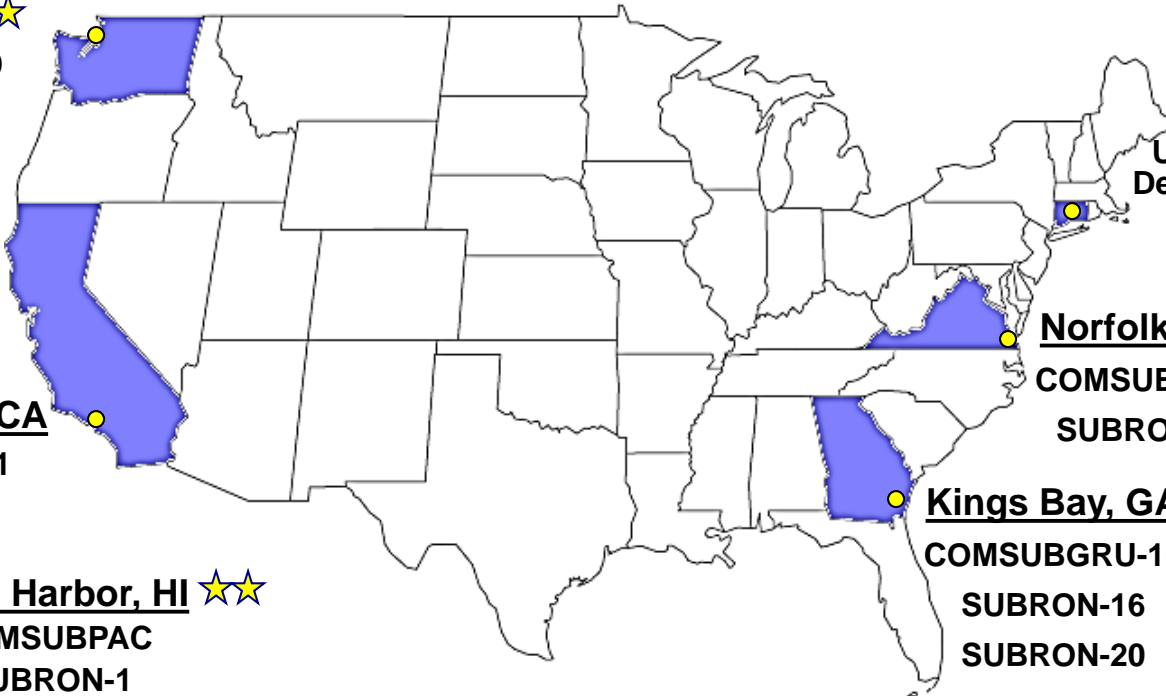
Bangor, WA ★
COMSUBGRU-9
SUBDEVRON-5
SUBRON-17
SUBRON-19

San Diego, CA
SUBRON-11

Pearl Harbor, HI ★★
COMSUBPAC
SUBRON-1
SUBRON-7



Guam
SUBRON-15



Groton, CT ★
Undersea Warfare
Development Center
SUBRON-12
SUBRON-4

Norfolk, VA ★★★
COMSUBFOR
SUBRON-6

Kings Bay, GA ★
COMSUBGRU-10
SUBRON-16
SUBRON-20

Force Structure

- 53 – SSNs
- 4 – SSGNs
- 14 – SSBNs

Force Manpower

- Total: ~23,000
- Officer: ~2,000
- Enlisted: ~17,000
- Civilian: ~2,000
- Reserve: ~2,000



Submarine Force Mission Areas

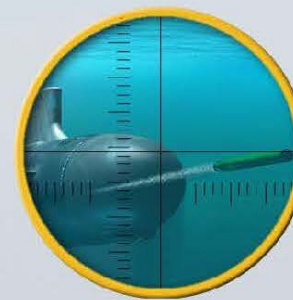
Strike



Strategic Deterrence



ASW



SOF



ISR



ASUW



Counter Drug Ops



Mine Warfare



Owning the Undersea Domain

We deliver value *every single day*

- **Sea-Based Strategic Deterrence**
 - ✓ New START: ~50% to ~70% of accountable nuclear warheads
 - ✓ Only survivable leg of nuclear TRIAD
 - ✓ Preventing major power war for 7 decades
- **Far forward, persistent, covert posture**
 - ✓ Non-provocative influence to deter and de-escalate potential conflicts
 - ✓ Undersea and cross-domain Intelligence, Surveillance, and Reconnaissance
 - ✓ Real-time warning to U.S. leadership
 - ✓ Presence permits rapid transition from peacetime

Ready for *decisive operations and combat*

- The key that unlocks the adversary's Anti-Access / Area Denial (A2AD) door
- Operating inside adversary defenses
- Access that "sets the table" for Joint Forces
- Stealth and surprise at the time and place of our choosing

Expanding the decision space for National Leadership

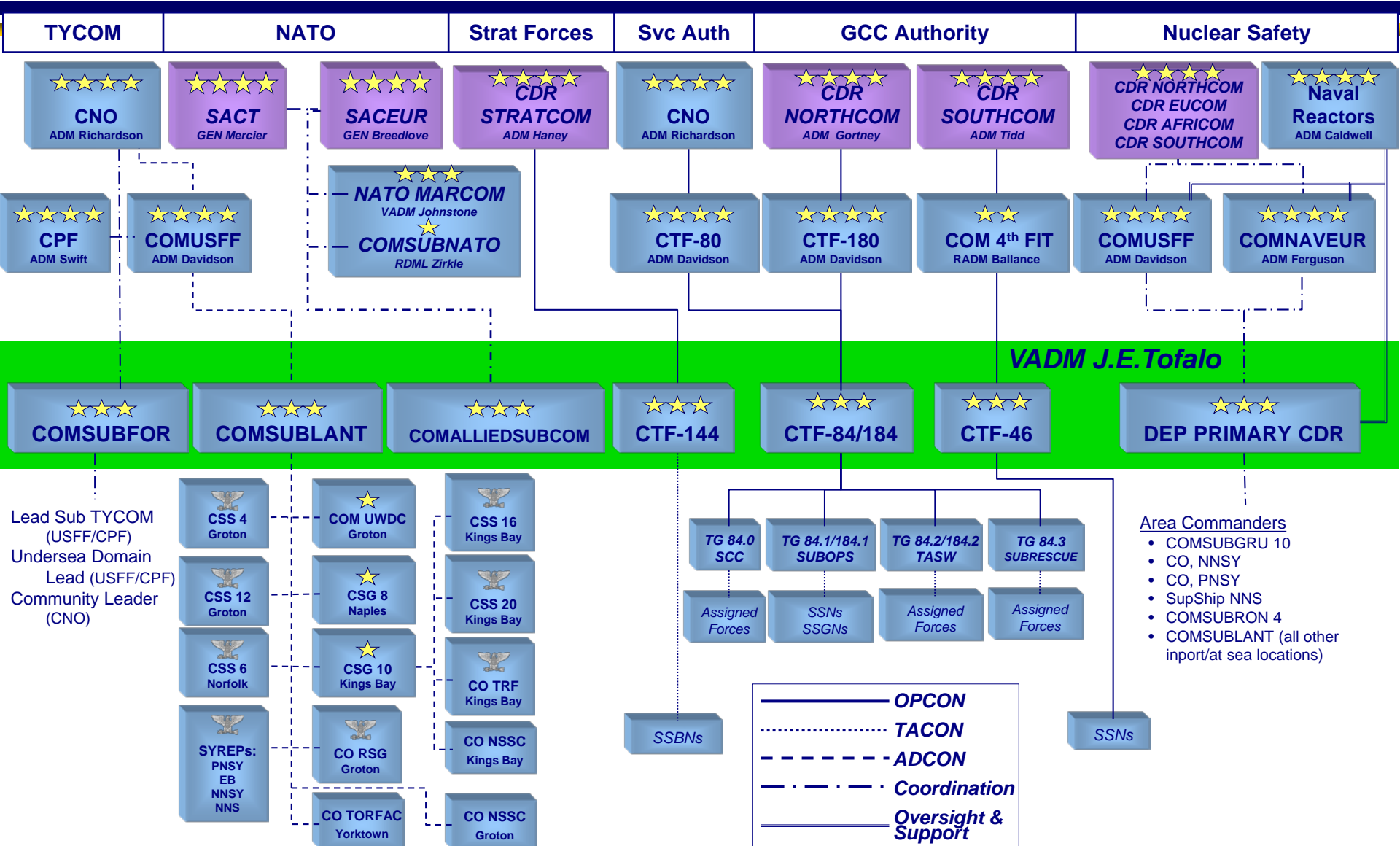
Commander Submarine Forces



Vice Admiral Joe Tofalo
Commander, Submarine Forces



Chain of Command





CSL 2015 Accomplishments

- **Zero Class A Mishaps, 2 Years in a row**
- **Established Force Improvement and Operational Safety Office**
 - Numerous associated initiatives
- **Fully implemented crew rest initiative**
- **Completed EW Wholeness Review**
- **Improved A2AD communications proficiency**
- **Exercised active partnerships with 8 Sub Forces**
 - UK, CAN, FRA, NLD, BRA, PER, CHL, COL
- **Undersea Rapid Capability Initiatives**
 - FMAUV: 1st sub-launched UUV, CDR msn
 - LRPS: SCEPS test, land complete; start in-water
 - TASW Offset : Began prototype development
- **SECNAV Goal of 10% Inport Energy Reduction**
- **All Global Force Management targets met:**
 - Deployed ~1 SSN/month; ~1 SSBN/3 weeks
- **Highest SSBN OPTEMPO since 2005, + ~2 patrols**
- **SSBN Faslane port visit – first in over a decade**
- **Established UWDC**
 - Developing doctrine; Assessing warfighting; Training the Fleet; Advancing capability/wholeness
- **Increased TASW training**
 - 2x SCCs, 3x CSG/ESG FRTP cycles, USFFC MOC
- **Initiated submarine TACDEV reinvigoration**
- **Retention/attrition exceeded Navy goals**
 - Zone A best among URL communities
- **Embedded Mental Health pilot complete**
 - Transitioning to Program of Record
- **Women in Submarines**
 - ~20% of submarine crews integrated
 - Over 115 total female submariners
 - 1st 3 SSNs integrated (MIN, VIR, MIS)
 - 1st enlisted application cycle complete
 - Added 19th crew for integration (JWR)
- **Fully Embraced Sailor 2025 Initiatives**